

Please check the examination details below before entering your candidate information

Candidate surname

Other names

**Pearson Edexcel**  
**International**  
**Advanced Level**

Centre Number

Candidate Number

--	--	--	--	--

--	--	--	--

**Time** 1 hour 45 minutes

**Paper**  
**reference**

**WGE01/01**

**Geography**

**International Advanced Subsidiary**

**PAPER 1: Global Challenges**

**You must have:**

Resource Booklet (enclosed)

Total Marks

## Instructions

- Use **black** ink or ball-point pen.
- **Fill in the boxes** at the top of this page with your name, centre number and candidate number.
- Answer **all** questions in Section A. Answer **either** Question 5 **or** Question 6 in Section B.
- Answer the questions in the spaces provided  
– *there may be more space than you need.*
- Calculators may be used.

## Information

- The total mark for this paper is 90.
- The marks for **each** question are shown in brackets  
– *use this as a guide as to how much time to spend on each question.*

## Advice

- Read each question carefully before you start to answer it.
- Check your answers if you have time at the end.
- Good luck with your examination.

Turn over ►

P66415A

©2021 Pearson Education Ltd.

1/1/1/1/1/1



Pearson

SECTION A

You must use the Resource Booklet.

Answer ALL questions. Write your answers in the spaces provided.

Some questions must be answered with a cross . If you change your mind about an answer, put a line through the box  and then mark your new answer with a cross .

1 Study Figure 1 in the Resource Booklet.

(a) (i) Name the type of plate boundary shown.

(1)

(ii) Explain **one** cause of earthquakes at plate boundaries.

(2)

(iii) Explain **one** reason why it is difficult to manage risk in places experiencing earthquakes.

(2)

DO NOT WRITE IN THIS AREA

DO NOT WRITE IN THIS AREA

DO NOT WRITE IN THIS AREA



(b) Explain how level of development can affect the scale of natural disasters.

(4)

(c) Explain why mega-disasters need different management responses compared to other natural disasters.

(6)

(Total for Question 1 = 15 marks)

DO NOT WRITE IN THIS AREA

DO NOT WRITE IN THIS AREA

DO NOT WRITE IN THIS AREA



2 Study Figure 2 in the Resource Booklet.

(a) (i) Define the term **adaptation**.

(1)

.....

.....

(ii) Describe **one** way in which farmers could be affected economically by global warming in the future.

(2)

.....

.....

.....

(iii) Suggest how **one** of the methods shown in Figure 2 could help farmers manage the impacts of global warming.

(2)

.....

.....

.....

(b) Explain how **two** global actions have attempted to reduce carbon emissions.

(4)

1 .....

.....

.....

.....

2 .....

.....

.....

.....



(c) Explain how long-term climate change is reconstructed using evidence from the past.

(6)

DO NOT WRITE IN THIS AREA

DO NOT WRITE IN THIS AREA

DO NOT WRITE IN THIS AREA

(Total for Question 2 = 15 marks)



3 Study Figure 3 in the Resource Booklet.

(a) (i) Identify the type of country that has banned Huawei: (1)

- A Developing countries
- B Emerging countries
- C Developed countries
- D Newly industrialising countries

(ii) Compare the distribution of countries which have banned Huawei to those who have a positive attitude to Huawei. (3)

.....

.....

.....

.....

.....

.....

(iii) Suggest **one** reason why Huawei, a Chinese telecom TNC, is trading in new international markets. (2)

.....

.....

.....

.....



(b) Explain **one** way the World Trade Organisation (WTO) has promoted globalisation.

(3)

Dotted lines for writing answer (b)

(c) Explain why economic liberalisation has benefitted TNCs.

(6)

Dotted lines for writing answer (c)

(Total for Question 3 = 15 marks)

DO NOT WRITE IN THIS AREA

DO NOT WRITE IN THIS AREA

DO NOT WRITE IN THIS AREA



4 Study Figure 4 in the Resource Booklet.

(a) (i) Name the type of graph shown.

(1)

(ii) Which **one** of the following statements is correct?

(1)

- A** In 1950 the percentage of males outnumbered the females.
- B** In 1950 the largest age group was 10 to 15 years.
- C** In 2015 the largest age group was 20 to 25 years.
- D** In 2015 the percentage of children outnumbered the elderly.

(iii) Suggest **two** reasons for the changes in the population structure of Germany between 1950 and 2015.

(4)

1 .....

.....

.....

.....

2 .....

.....

.....

(b) Explain **one** way that globalisation has encouraged rural-urban migration.

(3)

.....

.....

.....

.....

.....





(c) Explain why countries have different policies for managing international migration.

(6)

DO NOT WRITE IN THIS AREA

DO NOT WRITE IN THIS AREA

DO NOT WRITE IN THIS AREA

DO NOT WRITE IN THIS AREA

DO NOT WRITE IN THIS AREA

DO NOT WRITE IN THIS AREA

DO NOT WRITE IN THIS AREA

DO NOT WRITE IN THIS AREA

DO NOT WRITE IN THIS AREA

DO NOT WRITE IN THIS AREA

DO NOT WRITE IN THIS AREA

DO NOT WRITE IN THIS AREA

DO NOT WRITE IN THIS AREA

DO NOT WRITE IN THIS AREA

DO NOT WRITE IN THIS AREA

DO NOT WRITE IN THIS AREA

DO NOT WRITE IN THIS AREA

DO NOT WRITE IN THIS AREA

DO NOT WRITE IN THIS AREA

DO NOT WRITE IN THIS AREA

DO NOT WRITE IN THIS AREA

DO NOT WRITE IN THIS AREA

**(Total for Question 4 = 15 marks)**

**TOTAL FOR SECTION A = 60 MARKS**



**SECTION B**

**Answer ONE question in this section – EITHER Question 5 OR Question 6.**

**Use the evidence provided in the Resource Booklet, your own ideas and examples.**

**If you answer Question 5 put a cross in the box  .**

**5** Study Figure 5 in the Resource Booklet.

(a) Suggest physical and human reasons for the global distribution of landslides.

(10)

Dotted lines for writing the answer.

DO NOT WRITE IN THIS AREA

DO NOT WRITE IN THIS AREA

DO NOT WRITE IN THIS AREA



(b) Assess the extent to which the level of risk from hydrometeorological hazards is mainly caused by human factors.

(20)

DO NOT WRITE IN THIS AREA

DO NOT WRITE IN THIS AREA

DO NOT WRITE IN THIS AREA

Area with horizontal dotted lines for writing.



P 6 6 4 1 5 A 0 1 1 1 6

DO NOT WRITE IN THIS AREA

DO NOT WRITE IN THIS AREA

DO NOT WRITE IN THIS AREA

(Total for Question 5 = 30 marks)



DO NOT WRITE IN THIS AREA  
DO NOT WRITE IN THIS AREA  
DO NOT WRITE IN THIS AREA

Do not answer Question 6 if you have answered Question 5.

If you answer Question 6 put a cross in the box .

6 Study Figure 6 in the Resource Booklet.

(a) Suggest reasons for the distribution and growth rate of megacities by 2030.

(10)

Ruled area for answer with horizontal dotted lines.



(b) Assess the extent to which the benefits of a youthful population outweigh the costs of an increasingly ageing population.

(20)

Area with horizontal dotted lines for writing.

DO NOT WRITE IN THIS AREA

DO NOT WRITE IN THIS AREA

DO NOT WRITE IN THIS AREA



DO NOT WRITE IN THIS AREA

DO NOT WRITE IN THIS AREA

DO NOT WRITE IN THIS AREA

**(Total for Question 6 = 30 marks)**

**TOTAL FOR SECTION B = 30 MARKS**

**TOTAL FOR PAPER = 90 MARKS**



P 6 6 4 1 5 A 0 1 5 1 6

DO NOT WRITE IN THIS AREA

DO NOT WRITE IN THIS AREA

DO NOT WRITE IN THIS AREA

**BLANK PAGE**





# Pearson Edexcel International Advanced Level

Time 1 hour 45 minutes

Paper  
reference

**WGE01/01**

## Geography

International Advanced Subsidiary

**PAPER 1: Global Challenges**

### Resource Booklet

Do not return this Booklet with the question paper.

P66415A

©2021 Pearson Education Ltd.

1/1/1/1/1



Turn over ►


  
Pearson

**SECTION A**

**The following resource relates to Question 1.**



**Key:**

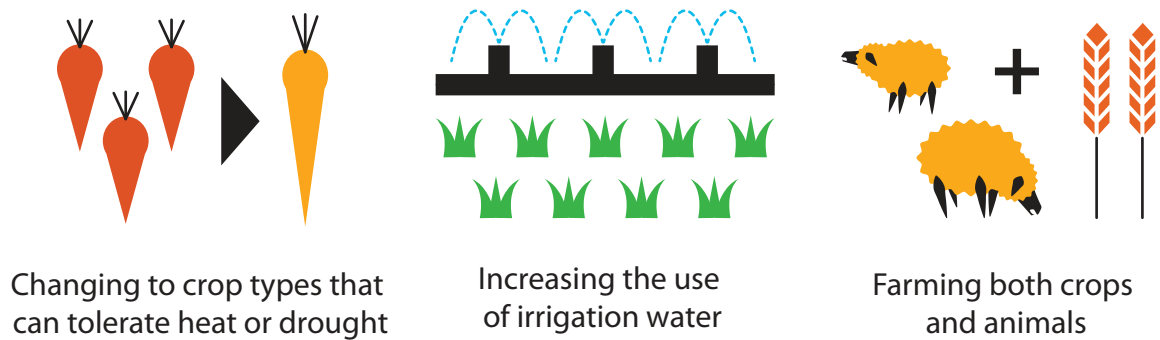
 = relative motion of the tectonic plates

**Figure 1**

**Aerial photograph of the San Andreas Fault, northwest of Los Angeles**

**The following resource relates to Question 2.**

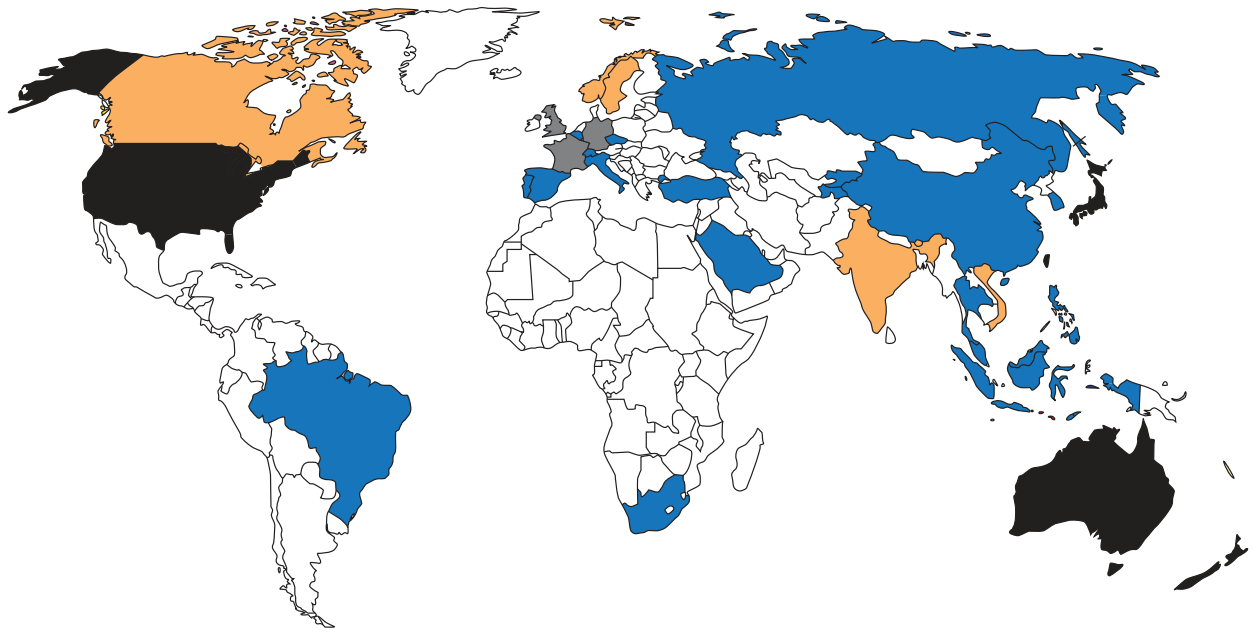
Climate change, food and farming




**Figure 2**


**Three ways farmers could adapt to global warming**


The following resource relates to Question 3.




**Key:**

 Huawei is banned

 Positive attitude to Huawei

 Data unavailable

 Huawei activities are restricted

 Undecided

**Figure 3**

**Government attitudes to the Chinese telecom Transnational Corporation (TNC), Huawei, in 2019**

The following resource relates to Question 4.

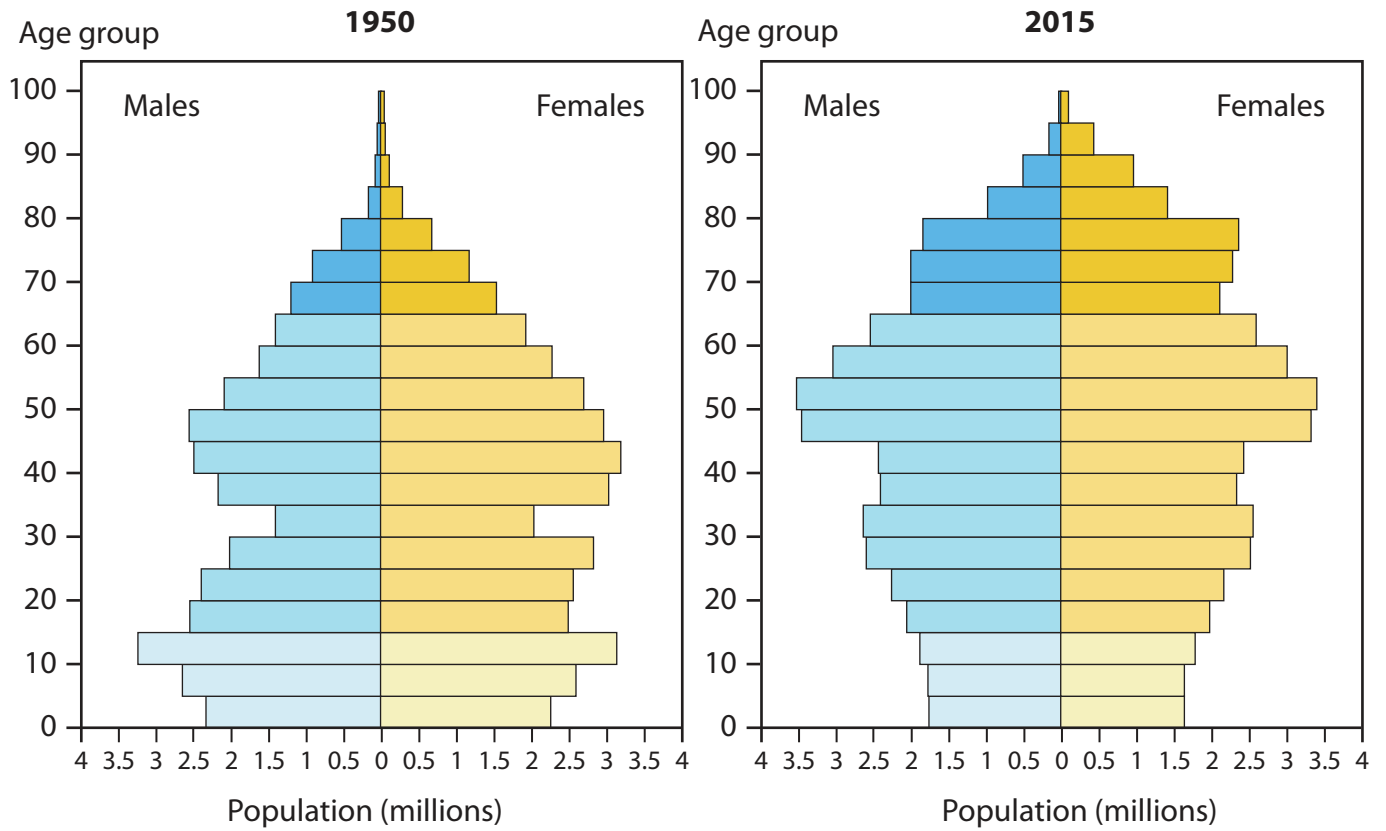


Figure 4

The population structure of Germany, 1950 and 2015

The following resource relates to Question 5.

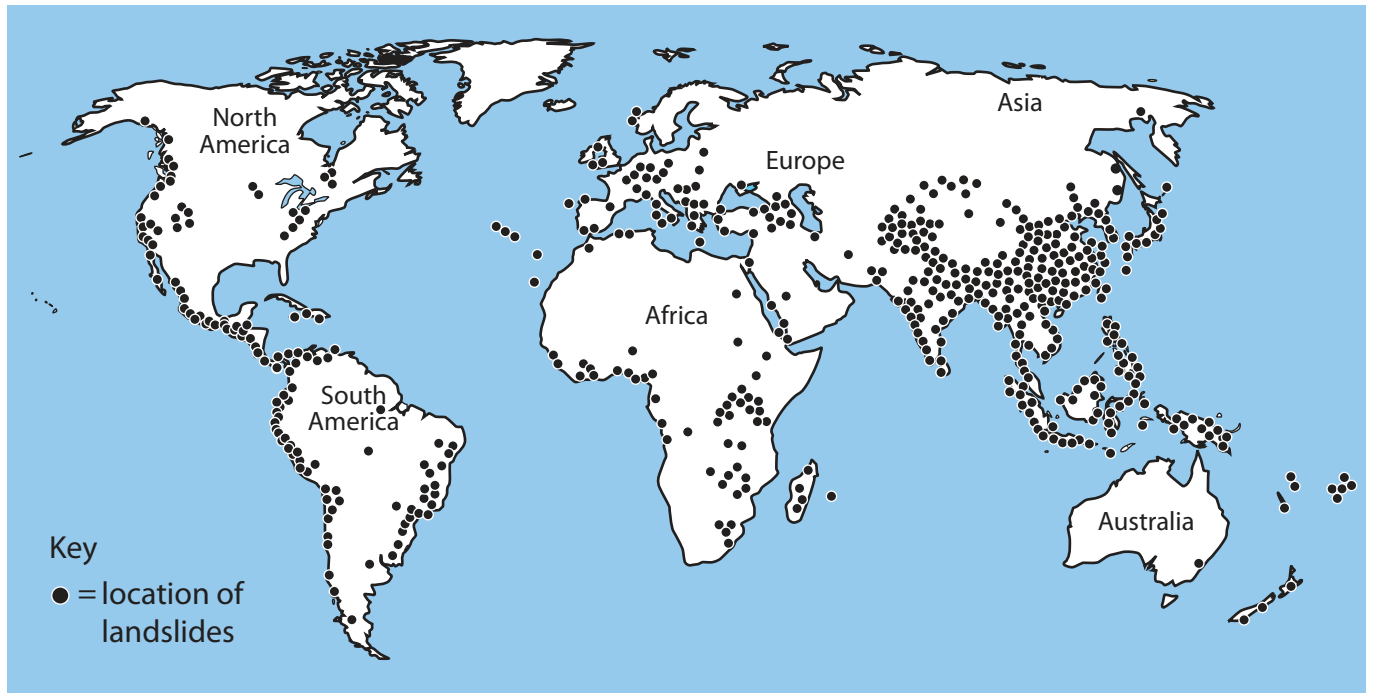


Figure 5

The global distribution of landslides, 2018

The following resource relates to Question 6.

## The World's Megacities Are Set for Major Growth

Population growth of the world's top 15 megacities (millions, 2011-2025)

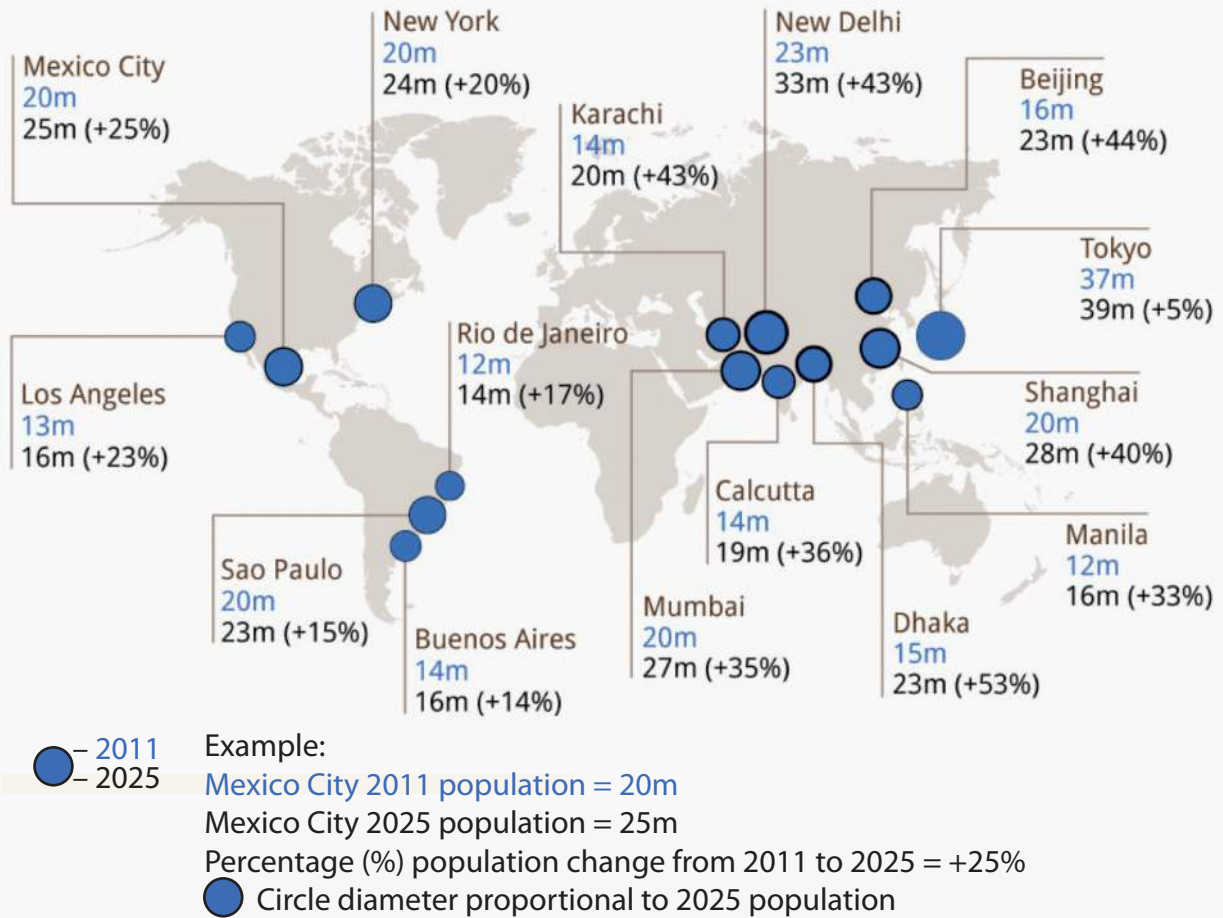


Figure 6

The population and growth rate of megacities by 2025

**BLANK PAGE**

**BLANK PAGE**

**Acknowledgements**

Pearson Education Ltd. gratefully acknowledges all following sources used in preparation of this paper:

Source 1 adapted from: © Ikluft

Source 2 adapted from: Sonja Vermeulen (Head of Research, CCAFS)

Source 3 adapted from: Daily Express

Source 4 adapted from: <https://www.researchgate.net/figure/>

Population-pyramid-for-Germany\_fig5\_305617774

Source 5 adapted from: <https://blogs.agu.org/landslideblog/2018/08/28/mapping-global-landslides/>

Source 6 adapted from: <https://www.statista.com/chart/1826/population-growth-in-the-worlds-megacities/>